

The oval is a symbol of birth, renewal and rebirth . . .

Site Challenges

- Large open space - limited use
- Hot and cold - no shade / shelter
- Limited seasonal use / activities
- Poorly defined edges and entries
- Narrow poor condition perimeter walks
- 12th Avenue SW - busy / noisy
- Limited random seating / tables
- No relationship to CBE complex
- Fencing (north and east edges)
- Angular informal pathway divides site
- Grass in poor condition
- No lighting

Site Opportunities

- Establish strong entries and edges to park
- Enhance relationship / views to CBE complex
- Enhance urban edge along 12th Avenue SW
- Integrate 13th Avenue SW Heritage Greenway
- Create large open multi-use green space
- Provide formal / informal stage areas and large and small integrated event space
- Provide outdoor rooms and variety of experience
- Enhance pedestrian experience - in / outside park
- Provide feature and area lighting
- Public art integration
- All season use / shade / shelter

Schematic Plan - Space + Place

- Create large multi-use space while retaining informal desire line pathway
- Establish strong urban identity through sculptural form, feature lighting and public art
- Strong definition of park while integrating edges
- Create multiple seating / gathering opportunities
- Provide shaded plaza as destination point along 13th Avenue SW Heritage Greenway
- Provide buffer to 12th Avenue SW while strengthening urban edge and threshold entry experience
- Enhance CBE blank wall with foreground planting
- Provide ample width pedestrian pathways and direct and indirect routes and experiences through park
- Add warmth in winter and shade in summer through planting and warming elements

Park Vision

The City of Calgary Parks asked the community to choose the one statement that best describes their vision for the park with following results:

72% indicated they would like the new park to be used for multiple types of activities where calm / passive uses (ex. reading / socializing) can be accommodated as well as non-structured, more active activities (ex. throwing a frisbee with friends). This is the vision that was used to create the proposed plan.

Other results included:

17% indicated they would like the new park to be a fairly calm park that would be primarily used for activities such as strolling, reading and picnicking

10% indicated they would have liked the new park to be an off-leash area for dogs

1% indicated they would have liked the new park to be primarily a grass sports field that could have been rented for organized sporting groups.

0% indicated they would like the new park to be primarily a hard surface sports court (i.e. tennis or basketball) that could be booked.

Key Principles from Community Comments:

Provide a park that is occasionally used for events including cultural events that engage the CBE

Provide trees and perennial flower / shrub / grass plantings

Provide a park that is mostly soft landscape with minimal hard surface

Provide a park that includes compelling art component

Provide a park that is well lit and safe

Legend

1. The Sentinels

12th Avenue SW park identity markers
Potential seating / lighting / LED screens / sculpture
Key elements of 12th Avenue SW urban edge
Potential public art opportunity

2. The Gardens

Enhanced entry experience - true park entry
Native / adaptive plant material - trees / perennials / grasses - low water use
12th Avenue landscape buffer to park and CBE wall
Potential public art opportunity

3. The Oval Walk

4m width - 3.5m clear with light bases
200m length - 5x around = 1km circuit
Granite paver edges w/ potential interpretive etching
Seating walls / cubes along outside edge
LED lights beneath seat walls
Seat walls frame entries / low barrier edge for sports
Flooded in winter for pleasure skating
Potential public art opportunity

4. Grand Lawn

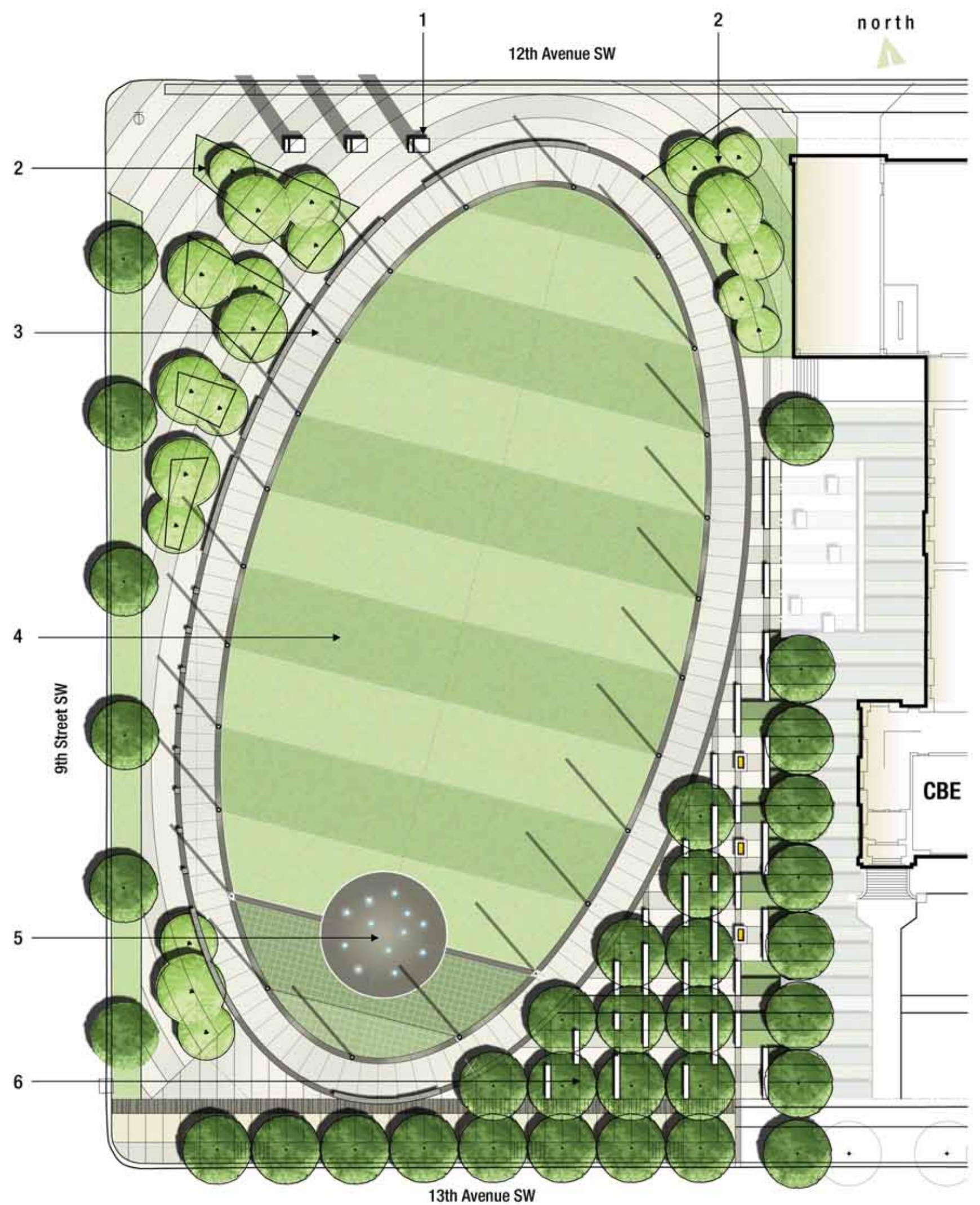
2360m² = 0.5 acres
79.0m longest point by 39.0m widest point
Calm passive use space - socializing / picnicking
Informal active use - frisbee / catch / kicking a ball
Alternating turf ribbons - fescue sod / bluegrass sod

5. Stage / Water Feature

100m² paved stage area with "jumping water" fountain
140m² soft paver area for dance performance / tai chi / yoga
Potential public art opportunity

6. Fire Theatre

375m² plaza area
Linear seating walls / tables / benches w/ LED lights
Architectural gas fireplace elements
Shade trees / linear shrub rows
13th Avenue SW destination plaza
Outdoor classroom / theatre / informal performance
Potential public art opportunity





Grand Lawn space and overall park vegetation



Fire theatre - seating walls / tables / safe fire feature



Seating / lighting along Oval Walk



Fire theatre - seating walls / tables / safe fire features



Water feature + stage



The Sentinels - seating + lighting



Oval Walk + general pathways and circulation



Light columns + LED lights on benches



The Gardens

New Park for the Beltline

SCATLIFF+MILLER+MURRAY Inc.



THE CITY OF CALGARY
PARKS