

Trainmen Die in Twisted Wreckage of Trains

The London Evening Free Press

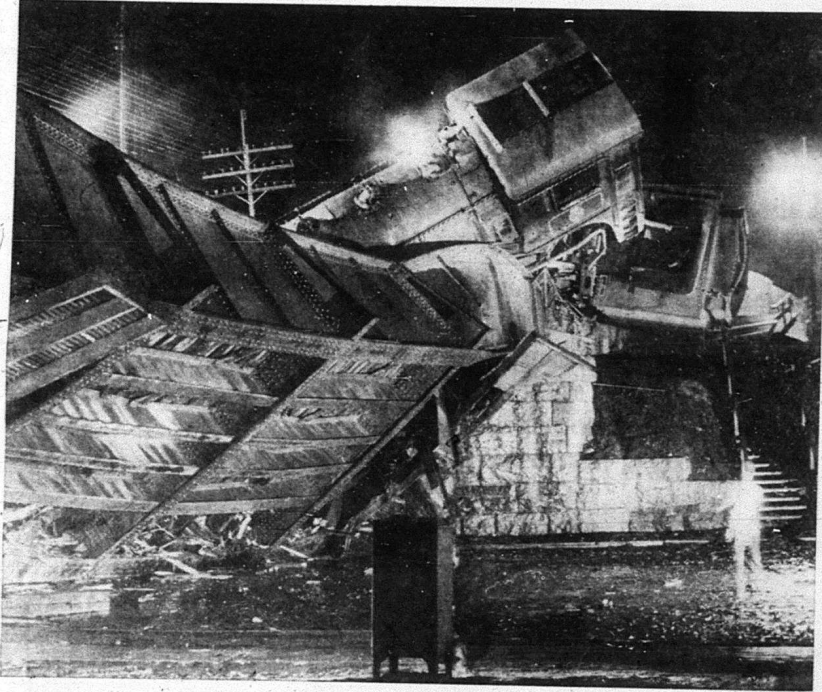
THURSDAY, MAY 3, 1956—SECOND SECTION



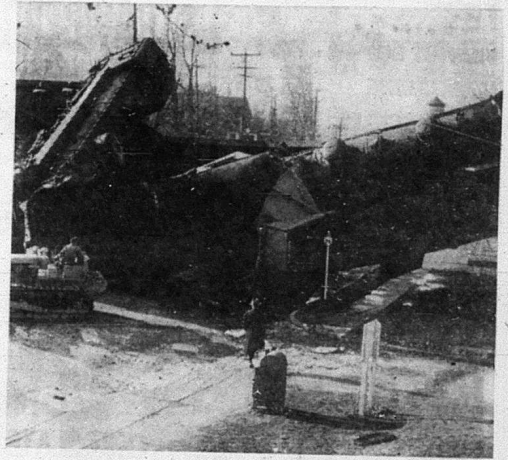
Spectators watch scene where CPR trainmen were killed last night



Searing steam kept rescuers from smashed locomotive

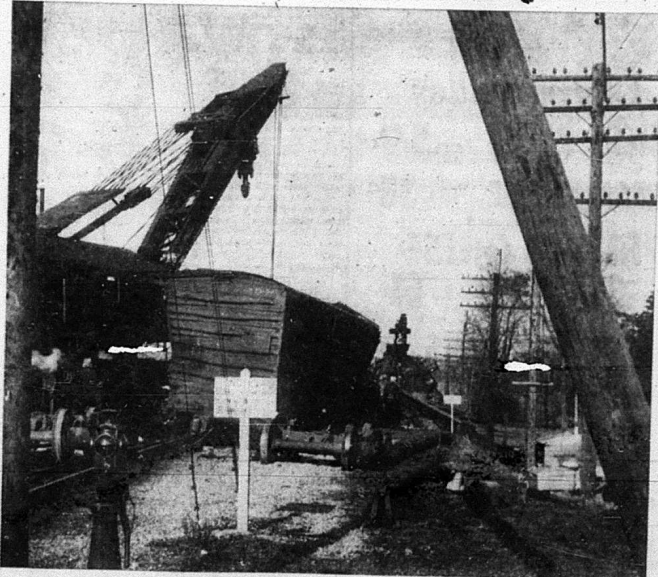


Bridge collapsed under wreck's weight



Bulldozer works to clear Wafer street.

At least two died in twisted wreckage of two CPR freight trains at Galt last night. Their bodies were cut from the engine cabs early today. Dead are William Palmer, an engineer from Toronto, and Thomas Watson, a junior brakeman from Galt. Critically injured in the crash was George Nutkins, of London, who is in South Waterloo Hospital. Also in hospital is Henry Blocka, of Toronto. The westbound freight rammed the back of a train switching in the Galt yards. One engine crashed into the street below the bridge, while the second is resting partly on the bridge and partly in the street. Trains were re-routed over Canadian National Railway lines.



A big wrecking crane moves in to help move wrecked box car from the tracks.



Freight cars lie crumpled on the line after the crash.

Local news usually found on this page appears on pages 36 and 37 of today's edition.