

FAMILY AQUATIC COMPLEX

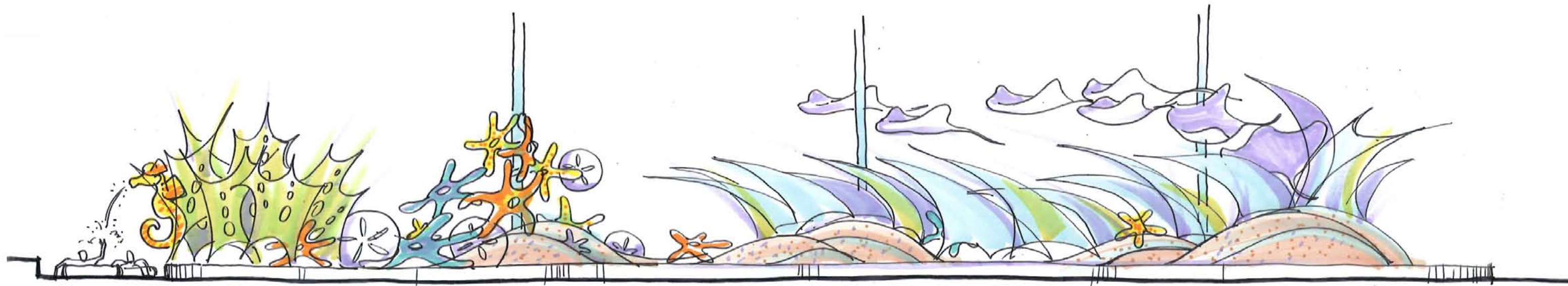
THEME PACKAGE

9-25-12



THE CONTENT OF THESE DRAWINGS, DESIGNS, AND CONCEPTS ARE COPYRIGHTED INTELLECTUAL PROPERTIES EXCLUSIVE TO THE WEBER GROUP INC.

THIS DRAWING AND THE RESULTANT CONSTRUCTED WORKS ARE THE PROPERTY OF WEBER GROUP INC. AND IS ISSUED SUBJECT TO THE CONDITION THAT THEY ARE NOT TO BE COPIED OR REPRODUCED EITHER IN WHOLE OR IN PART, OR USED IN ANY MANNER DETRIMENTAL TO ITS INTEREST WITHOUT THE EXPRESSED WRITTEN PERMISSION OF THE COPYRIGHT HOLDER, IN ACCORDANCE WITH TITLE 17 U.S.C. AND THE ARCHITECTURAL WORKS COPYRIGHT ACT OF 1990, P. L. 101-650, TITLE VII SECT. 70 ET. SEQ.



FAMILY AQUATIC COMPLEX

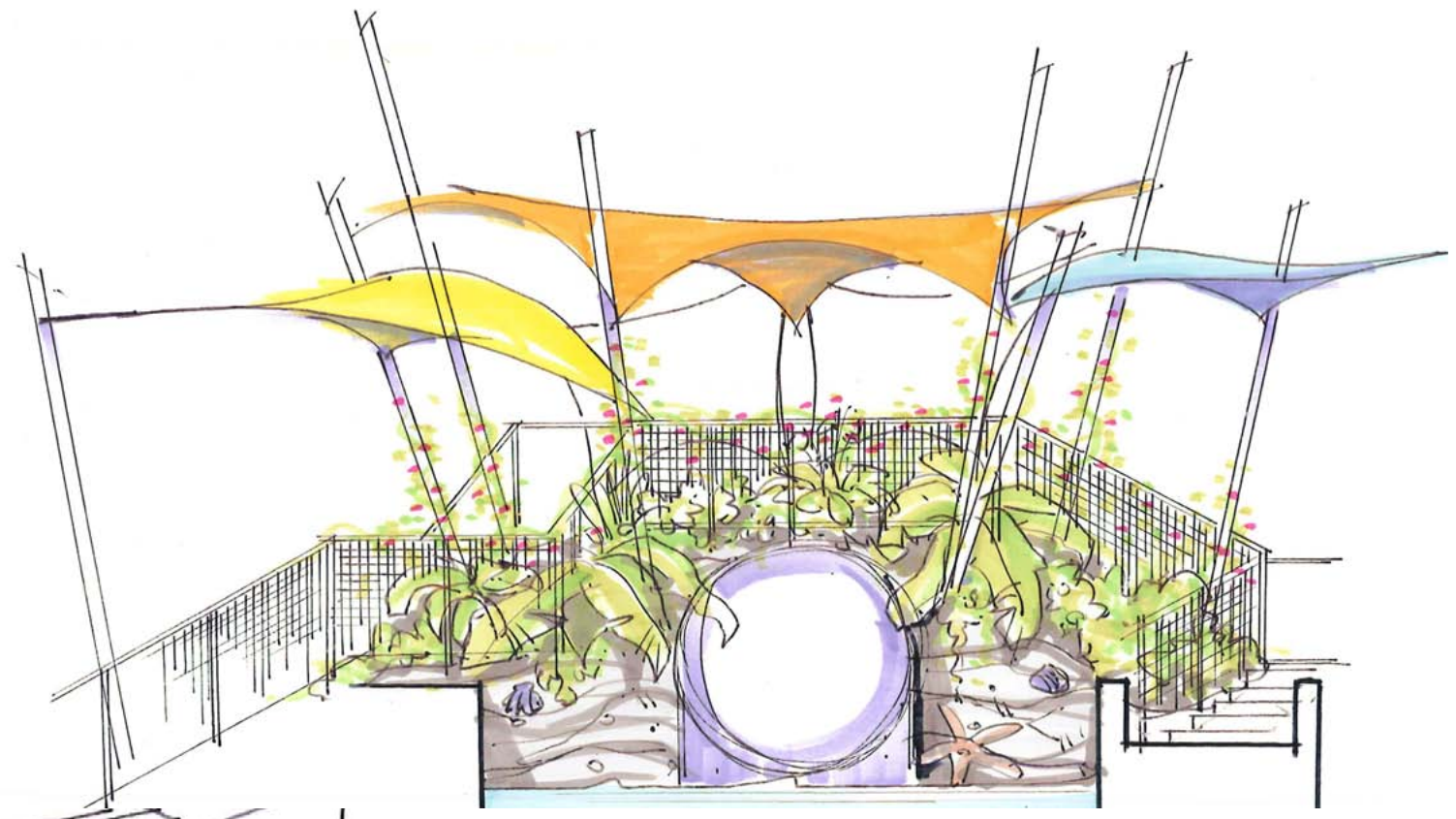
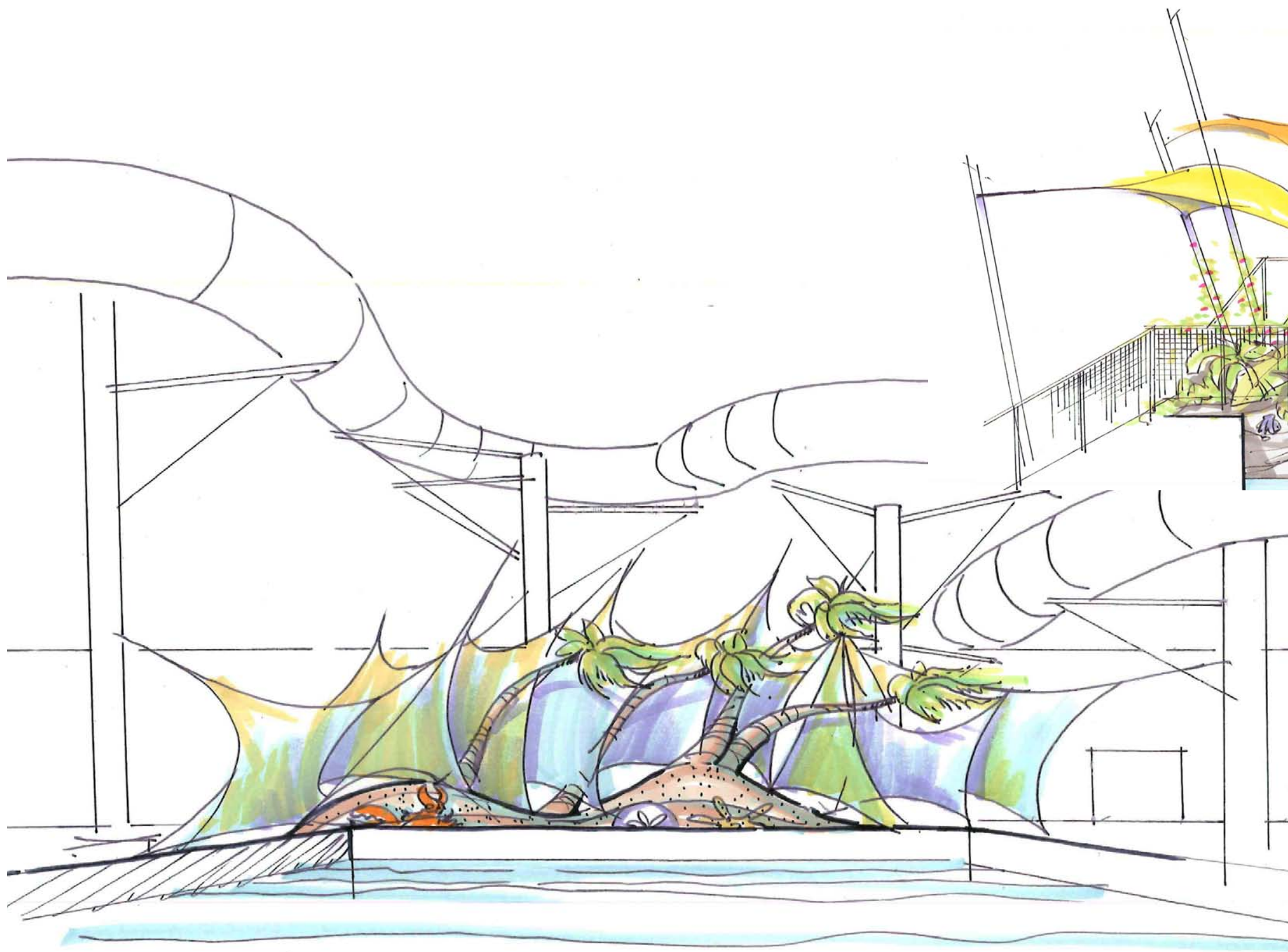
THEME PACKAGE

9-25-12



THE CONTENT OF THESE DRAWINGS, DESIGNS, AND CONCEPTS ARE COPYRIGHTED INTELLECTUAL PROPERTIES EXCLUSIVE TO THE WEBER GROUP INC.

THIS DRAWING AND THE RESULTANT CONSTRUCTED WORKS ARE THE PROPERTY OF WEBER GROUP INC. AND IS ISSUED SUBJECT TO THE CONDITION THAT THEY ARE NOT TO BE COPIED OR REPRODUCED EITHER IN WHOLE OR IN PART, OR USED IN ANY MANNER DETRIMENTAL TO ITS INTEREST WITHOUT THE EXPRESSED WRITTEN PERMISSION OF THE COPYRIGHT HOLDER, IN ACCORDANCE WITH TITLE 17 U.S.C. AND THE ARCHITECTURAL WORKS COPYRIGHT ACT OF 1990, P. L. 101-650, TITLE VII SECT. 70 ET. SEQ.



FAMILY AQUATIC COMPLEX

THEME PACKAGE

9-25-12



THE CONTENT OF THESE DRAWINGS, DESIGNS, AND CONCEPTS ARE COPYRIGHTED INTELLECTUAL PROPERTIES EXCLUSIVE TO THE WEBER GROUP INC.

THIS DRAWING AND THE RESULTANT CONSTRUCTED WORKS ARE THE PROPERTY OF WEBER GROUP INC. AND IS ISSUED SUBJECT TO THE CONDITION THAT THEY ARE NOT TO BE COPIED OR REPRODUCED EITHER IN WHOLE OR IN PART, OR USED IN ANY MANNER DETRIMENTAL TO ITS INTEREST WITHOUT THE EXPRESSED WRITTEN PERMISSION OF THE COPYRIGHT HOLDER, IN ACCORDANCE WITH TITLE 17 U.S.C. AND THE ARCHITECTURAL WORKS COPYRIGHT ACT OF 1990, P. L. 101-650, TITLE VII SECT. 70 ET. SEQ.



FAMILY AQUATIC COMPLEX

THEME PACKAGE

9-25-12



THE CONTENT OF THESE DRAWINGS, DESIGNS, AND CONCEPTS ARE COPYRIGHTED INTELLECTUAL PROPERTIES EXCLUSIVE TO THE WEBER GROUP INC.

THIS DRAWING AND THE RESULTANT CONSTRUCTED WORKS ARE THE PROPERTY OF WEBER GROUP INC. AND IS ISSUED SUBJECT TO THE CONDITION THAT THEY ARE NOT TO BE COPIED OR REPRODUCED EITHER IN WHOLE OR IN PART, OR USED IN ANY MANNER DETRIMENTAL TO ITS INTEREST WITHOUT THE EXPRESSED WRITTEN PERMISSION OF THE COPYRIGHT HOLDER, IN ACCORDANCE WITH TITLE 17 U.S.C. AND THE ARCHITECTURAL WORKS COPYRIGHT ACT OF 1990, P. L. 101-650, TITLE VII SECT. 70 ET. SEQ.



FAMILY AQUATIC COMPLEX

THEME PACKAGE

9-25-12



THE CONTENT OF THESE DRAWINGS, DESIGNS, AND CONCEPTS ARE COPYRIGHTED INTELLECTUAL PROPERTIES EXCLUSIVE TO THE WEBER GROUP INC.

THIS DRAWING AND THE RESULTANT CONSTRUCTED WORKS ARE THE PROPERTY OF WEBER GROUP INC. AND IS ISSUED SUBJECT TO THE CONDITION THAT THEY ARE NOT TO BE COPIED OR REPRODUCED EITHER IN WHOLE OR IN PART, OR USED IN ANY MANNER DETRIMENTAL TO ITS INTEREST WITHOUT THE EXPRESSED WRITTEN PERMISSION OF THE COPYRIGHT HOLDER, IN ACCORDANCE WITH TITLE 17 U.S.C. AND THE ARCHITECTURAL WORKS COPYRIGHT ACT OF 1990, P. L. 101-650, TITLE VII SECT. 70 ET. SEQ.



FAMILY AQUATIC COMPLEX

THEME PACKAGE

9-25-12



THE CONTENT OF THESE DRAWINGS, DESIGNS, AND CONCEPTS ARE COPYRIGHTED INTELLECTUAL PROPERTIES EXCLUSIVE TO THE WEBER GROUP INC.

THIS DRAWING AND THE RESULTANT CONSTRUCTED WORKS ARE THE PROPERTY OF WEBER GROUP INC. AND IS ISSUED SUBJECT TO THE CONDITION THAT THEY ARE NOT TO BE COPIED OR REPRODUCED EITHER IN WHOLE OR IN PART, OR USED IN ANY MANNER DETRIMENTAL TO ITS INTEREST WITHOUT THE EXPRESSED WRITTEN PERMISSION OF THE COPYRIGHT HOLDER, IN ACCORDANCE WITH TITLE 17 U.S.C. AND THE ARCHITECTURAL WORKS COPYRIGHT ACT OF 1990, P. L. 101-650, TITLE VII SECT. 70 ET. SEQ.



FAMILY AQUATIC COMPLEX

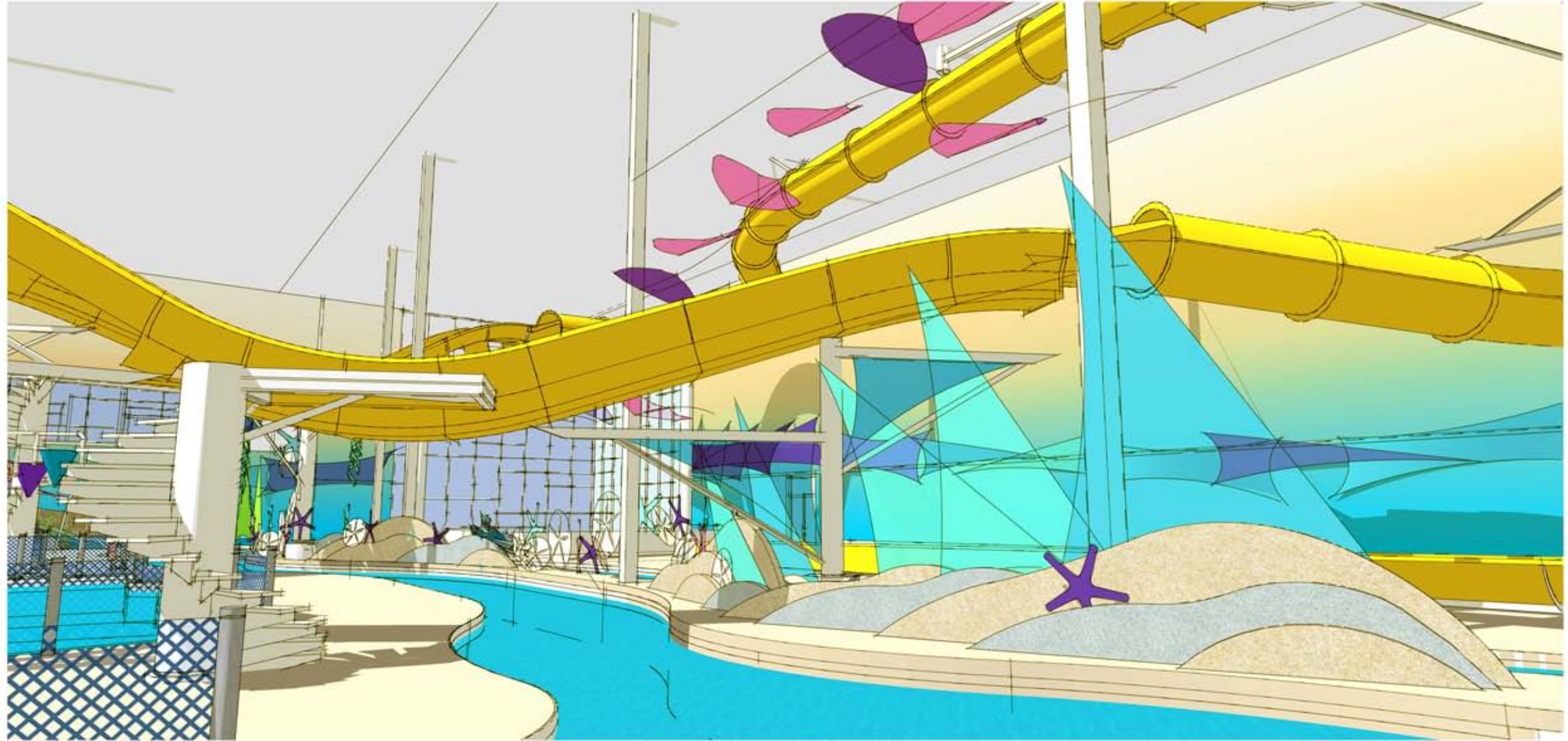
THEME PACKAGE

9-25-12



THE CONTENT OF THESE DRAWINGS, DESIGNS, AND CONCEPTS ARE COPYRIGHTED INTELLECTUAL PROPERTIES EXCLUSIVE TO THE WEBER GROUP INC.

THIS DRAWING AND THE RESULTANT CONSTRUCTED WORKS ARE THE PROPERTY OF WEBER GROUP INC. AND IS ISSUED SUBJECT TO THE CONDITION THAT THEY ARE NOT TO BE COPIED OR REPRODUCED EITHER IN WHOLE OR IN PART, OR USED IN ANY MANNER DETRIMENTAL TO ITS INTEREST WITHOUT THE EXPRESSED WRITTEN PERMISSION OF THE COPYRIGHT HOLDER, IN ACCORDANCE WITH TITLE 17 U.S.C. AND THE ARCHITECTURAL WORKS COPYRIGHT ACT OF 1990, P. L. 101-650, TITLE VII SECT. 70 ET. SEQ.



FAMILY AQUATIC COMPLEX

THEME PACKAGE

9-25-12



THE CONTENT OF THESE DRAWINGS, DESIGNS, AND CONCEPTS ARE COPYRIGHTED INTELLECTUAL PROPERTIES EXCLUSIVE TO THE WEBER GROUP INC.

THIS DRAWING AND THE RESULTANT CONSTRUCTED WORKS ARE THE PROPERTY OF WEBER GROUP INC. AND IS ISSUED SUBJECT TO THE CONDITION THAT THEY ARE NOT TO BE COPIED OR REPRODUCED EITHER IN WHOLE OR IN PART, OR USED IN ANY MANNER DETRIMENTAL TO ITS INTEREST WITHOUT THE EXPRESSED WRITTEN PERMISSION OF THE COPYRIGHT HOLDER, IN ACCORDANCE WITH TITLE 17 U.S.C. AND THE ARCHITECTURAL WORKS COPYRIGHT ACT OF 1990, P. L. 101-650, TITLE VII SECT. 70 ET. SEQ.



FAMILY AQUATIC COMPLEX

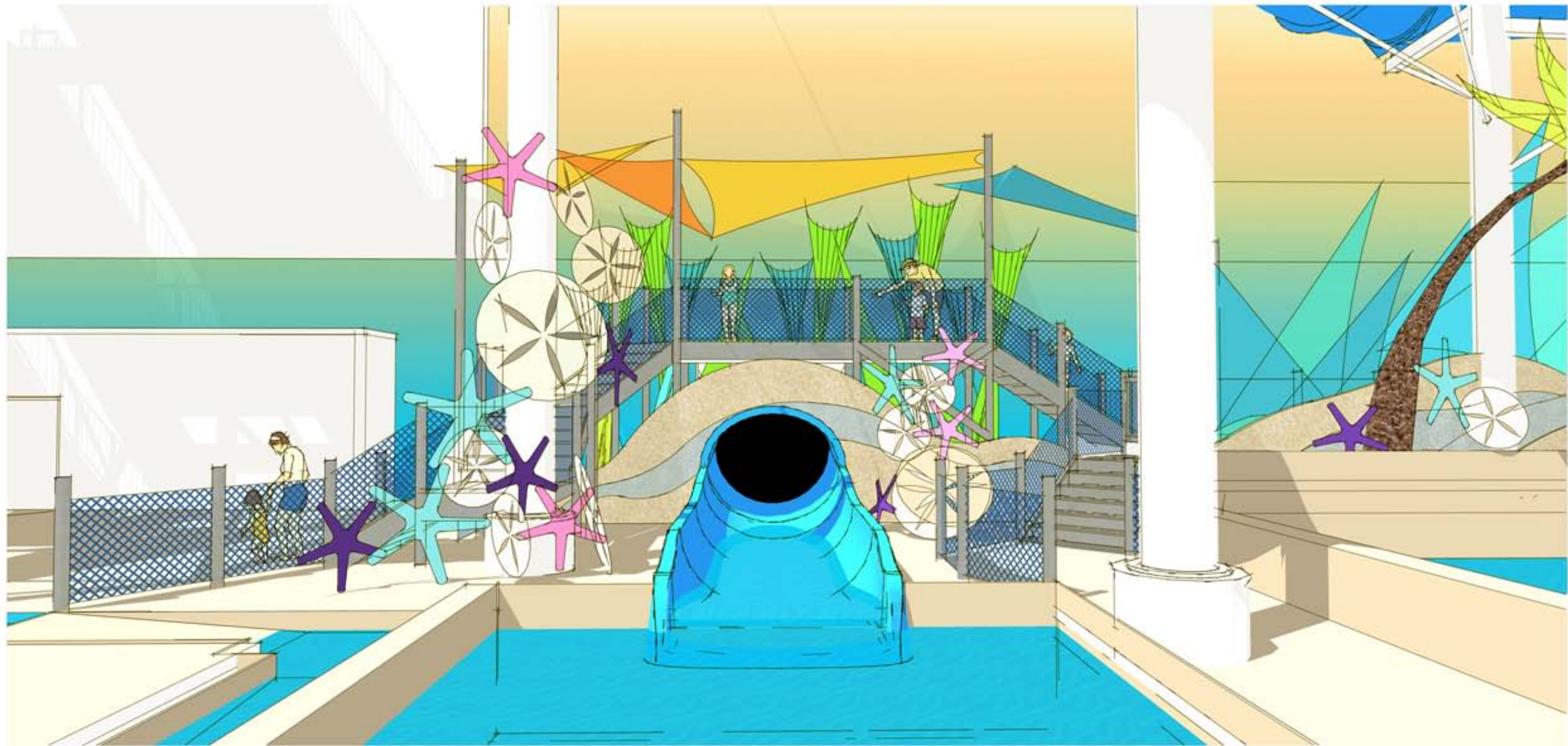
THEME PACKAGE

9-25-12



THE CONTENT OF THESE DRAWINGS, DESIGNS, AND CONCEPTS ARE COPYRIGHTED INTELLECTUAL PROPERTIES EXCLUSIVE TO THE WEBER GROUP INC.

THIS DRAWING AND THE RESULTANT CONSTRUCTED WORKS ARE THE PROPERTY OF WEBER GROUP INC. AND IS ISSUED SUBJECT TO THE CONDITION THAT THEY ARE NOT TO BE COPIED OR REPRODUCED EITHER IN WHOLE OR IN PART, OR USED IN ANY MANNER DETRIMENTAL TO ITS INTEREST WITHOUT THE EXPRESSED WRITTEN PERMISSION OF THE COPYRIGHT HOLDER, IN ACCORDANCE WITH TITLE 17 U.S.C. AND THE ARCHITECTURAL WORKS COPYRIGHT ACT OF 1990, P. L. 101-650, TITLE VII SECT. 70 ET. SEQ.



FAMILY AQUATIC COMPLEX

THEME PACKAGE

9-25-12



THE CONTENT OF THESE DRAWINGS, DESIGNS, AND CONCEPTS ARE COPYRIGHTED INTELLECTUAL PROPERTIES EXCLUSIVE TO THE WEBER GROUP INC.

THIS DRAWING AND THE RESULTANT CONSTRUCTED WORKS ARE THE PROPERTY OF WEBER GROUP INC. AND IS ISSUED SUBJECT TO THE CONDITION THAT THEY ARE NOT TO BE COPIED OR REPRODUCED EITHER IN WHOLE OR IN PART, OR USED IN ANY MANNER DETRIMENTAL TO ITS INTEREST WITHOUT THE EXPRESSED WRITTEN PERMISSION OF THE COPYRIGHT HOLDER, IN ACCORDANCE WITH TITLE 17 U.S.C. AND THE ARCHITECTURAL WORKS COPYRIGHT ACT OF 1990, P. L. 101-650, TITLE VII SECT. 70 ET. SEQ.



FAMILY AQUATIC COMPLEX

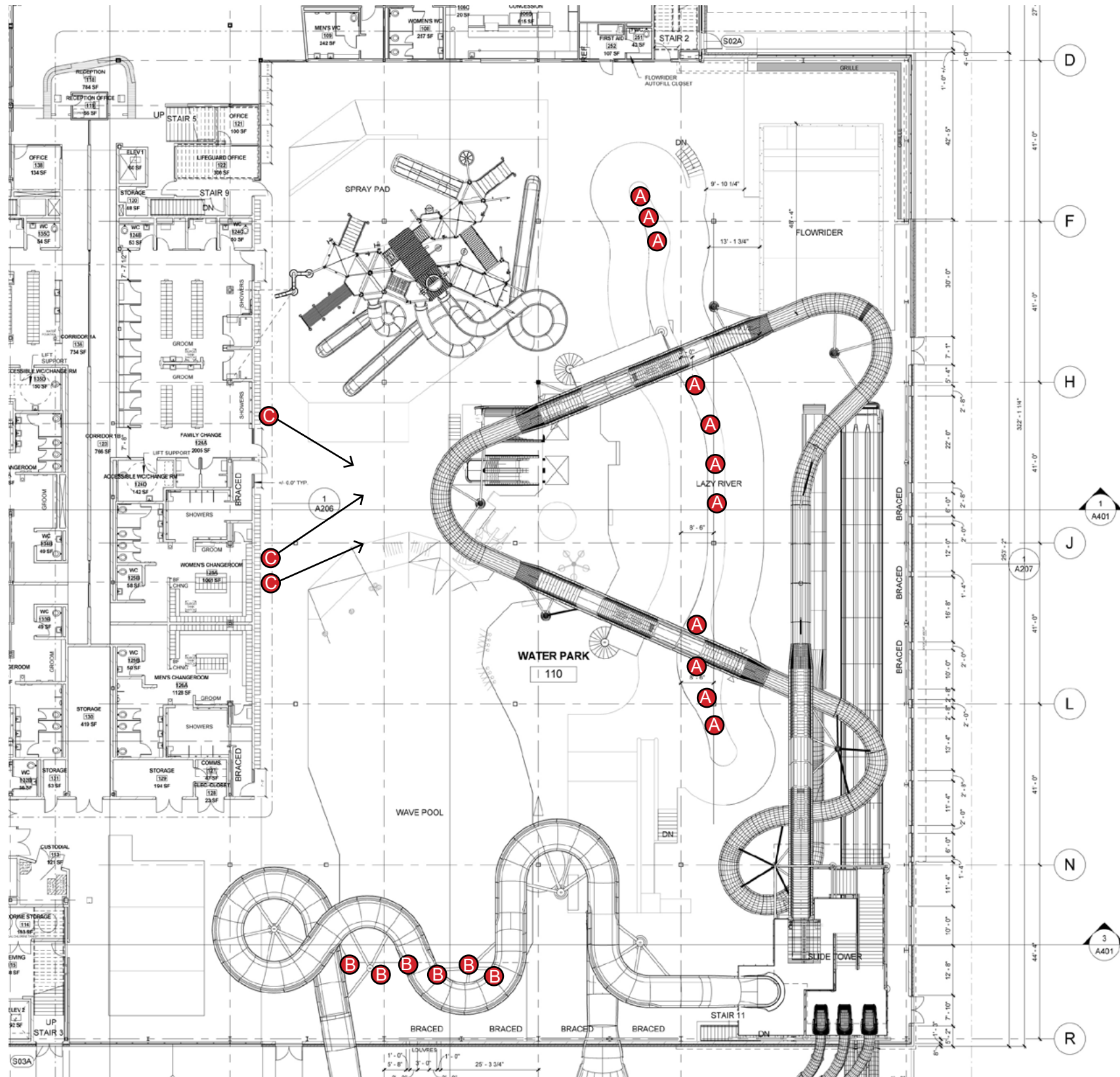
THEME PACKAGE

9-25-12



THE CONTENT OF THESE DRAWINGS, DESIGNS, AND CONCEPTS ARE COPYRIGHTED INTELLECTUAL PROPERTIES EXCLUSIVE TO THE WEBER GROUP INC.

THIS DRAWING AND THE RESULTANT CONSTRUCTED WORKS ARE THE PROPERTY OF WEBER GROUP INC. AND IS ISSUED SUBJECT TO THE CONDITION THAT THEY ARE NOT TO BE COPIED OR REPRODUCED EITHER IN WHOLE OR IN PART, OR USED IN ANY MANNER DETRIMENTAL TO ITS INTEREST WITHOUT THE EXPRESSED WRITTEN PERMISSION OF THE COPYRIGHT HOLDER, IN ACCORDANCE WITH TITLE 17 U.S.C. AND THE ARCHITECTURAL WORKS COPYRIGHT ACT OF 1990, P. L. 101-650, TITLE VII SECT. 70 ET. SEQ.



TAG	DESCRIPTION	COUNT
A	FLOOR MOUNTED FIXTURE ON ISLAND 120-240 v AC 50/60 HZ 1.5 AMPS (120V) OR .75 AMPS (240V)	11
B	FLOOR MOUNT WALL WASH HIDDEN IN CARVED BASE 120-240 v AC 50/60 HZ 1.5 AMPS (120V) OR .75 AMPS (240V)	6
C	WALL MOUNTED FIXTURE (OPTIONAL WITH ICON ELEMENT) @ +/- 20' AFF (TBD) 120V AC 50/60 HZ 1.25 AMPS	3

FAMILY AQUATIC COMPLEX

THEME PACKAGE

9-25-12



THE CONTENT OF THESE DRAWINGS, DESIGNS, AND CONCEPTS ARE COPYRIGHTED INTELLECTUAL PROPERTIES EXCLUSIVE TO THE WEBER GROUP INC.

THIS DRAWING AND THE RESULTANT CONSTRUCTED WORKS ARE THE PROPERTY OF WEBER GROUP INC. AND IS ISSUED SUBJECT TO THE CONDITION THAT THEY ARE NOT TO BE COPIED OR REPRODUCED EITHER IN WHOLE OR IN PART, OR USED IN ANY MANNER DETRIMENTAL TO ITS INTEREST WITHOUT THE EXPRESSED WRITTEN PERMISSION OF THE COPYRIGHT HOLDER, IN ACCORDANCE WITH TITLE 17 U.S.C. AND THE ARCHITECTURAL WORKS COPYRIGHT ACT OF 1990, P. L. 101-650, TITLE VII SECT. 70 ET. SEQ.