

FORWARD
TOGETHER
ONTARIO LIBERAL
LEADERSHIP  2013

Overview of the Leadership Process

Overview: The Leadership Process

In this session we will give an overview of the basics of the leadership process:

- ✦ Purpose of the process
- ✦ Requirements for participation
- ✦ Leadership Election Meetings (LEMs)
- ✦ Leadership Convention

Key Terms

- ✦ **Association** – Liberal organization such as a constituency association, women’s club or student club
- ✦ **Delegate** – OLP member elected by peers in an association to attend and vote at Convention
- ✦ **Alternate** – Non-voting attendee of Convention
- ✦ **Ex-Officio** – A person entitled to delegate status without having to be elected as a delegate

Key Terms

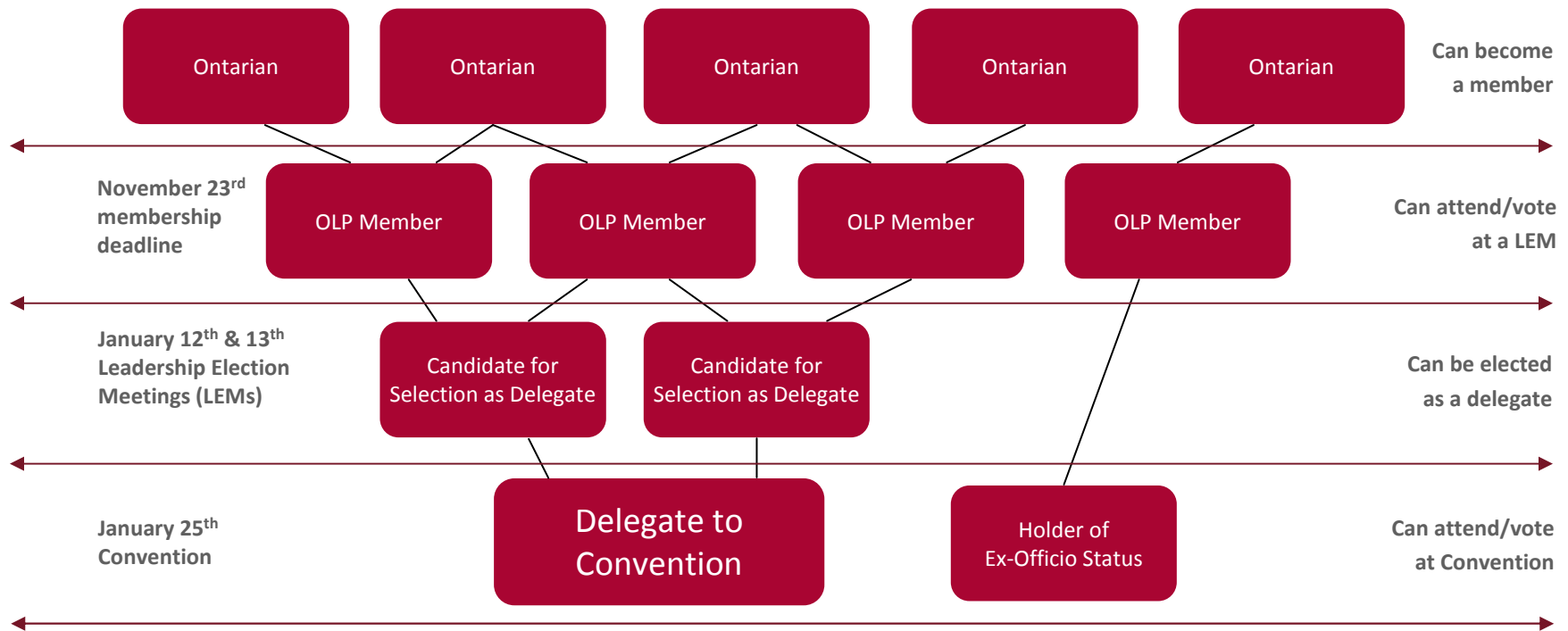
- ✦ **Leadership Election Meeting (LEM) – ‘polling station’ where association members will vote for a leadership candidate and for delegates to attend the convention on behalf of the association**

Ways to Participate

To take part in this process you can:

- ✦ **Ensure you have a valid membership by November 23rd to vote at a LEM**
- ✦ **Stand as a candidate for a delegate spot at a LEM, or have ex-officio status**
- ✦ **Attend the Convention**

What the Process Looks Like



Step 1 - Valid Membership

You can take out a membership in:

- ✦ A local provincial Liberal constituency association
- ✦ An Ontario Women's Liberal Commission (OWLC) club
- ✦ An Ontario Young Liberal (OYL) student club

You can sign up at www.ontarioliberal.ca.

Step 1 - Valid Membership

You must have a valid membership:

- ✦ By 11:59PM on November 23rd, 2012 to vote in a Leadership Election meeting in January 2013
- ✦ By the time you submit your delegate form, to stand for election as a delegate at a LEM
- ✦ By January 25th, 2013 to attend Convention as a delegate or alternate

Step 1 - Valid Membership

You have a valid membership if:

- ✦ You are an ABC member
- ✦ You purchased your most recent annual membership on or after October 1st, 2011 (valid until December 31st, 2012 and must renew in 2013)
- ✦ You purchased your most recent annual membership on or after October 1st, 2012 (valid until December 31st, 2013)
- ✦ You purchased a multi-year membership that has not expired

Step 1 - Valid Membership

You have a valid student club membership if:

- ✦ You have an OLP student club membership (valid until December 31st, 2013)
- ✦ You signed a student commission form and purchased your current annual LPC membership on or after September 1st, 2011 (valid until December 31st, 2012 and must renew in 2013)
- ✦ You signed a student commission form and purchased your current annual LPC membership on or after September 1st, 2012 (valid until December 31st, 2013)

Step 1 - Valid Membership

You will need to renew your membership during the leadership process if:

- ✦ You purchased your most recent annual membership before October 1st, 2012 – it will expire on December 31st, 2012
- ✦ You signed a student commission form and purchased your current annual LPC membership on or after September 1st, 2011 – it will expire on December 31st, 2012

Step 2 – Attend a LEM

You can vote at the association LEM where you are a member. LEMs will:

- ✦ Be held on January 12th and 13th, 2013
- ✦ Take place between 3PM and 8PM
- ✦ Be run by a neutral Local Returning Officer (LRO) with assistance from neutral Party volunteers
- ✦ Be equipped with membership renewal forms

Step 2 – Attend a LEM

LEMs will be grouped by region. The dates for the **2013** association LEMs by region are:

✦ **Saturday, January 12, 2013**

Central Region, Eastern Region, Northern Region

✦ **Sunday, January 13, 2013**

**South Central Region, Southwest Region,
Toronto Region**

Step 2 – Attend a LEM

At a constituency association LEM you will vote for a leadership candidate and 16 delegates, of which:

- ✦ **At least 4 must be women over the age of 25**
- ✦ **At least 4 must be men over the age of 25**
- ✦ **At least 4 must be 25 years old or less with at least 1 being male and 1 being female**

Step 2 – Attend a LEM

If you attend a student club LEM you will vote for a leadership candidate and 8 delegates, 25 years old or younger, of which at least:

- ✦ 3 must be women

- ✦ 3 must be men

If you attend an OWLC LEM you will vote for a leadership candidate and only 1 delegate.

Step 2 – Attend a LEM

You can only vote at one LEM where you are a member. If you are a member of:

- ✦ Your home constituency association and another constituency association you do not live in, you will automatically be added to the voting list in your home constituency association
- ✦ Your home constituency association and a women's or student club, you will be required to choose which voting list you will appear on and only be able to participate in one

Step 3 – Run as a Delegate

To run as a delegate, you must:

- ✦ **Submit your intent to stand as a delegate at least 1 week before the LEM**
- ✦ **Be a current member both on the date you submit your signed intent to stand as a delegate form, and on the date of the LEM**

Step 4 – Get Elected as a Delegate

Delegates are elected at LEMs and the delegated process means:

- ✦ **Voting results at LEMs determine which candidates for delegate spots will become delegates**
- ✦ **All unsuccessful candidates for delegate spots will become alternates**

Step 4 – Get Elected as a Delegate

The results of LEMs are based on the:

- ✦ Proportionality of the votes the leadership candidates receive
- ✦ Age and gender demographics of the candidates for delegate spots
- ✦ Number of votes each person receives

A full explanation will follow in the next presentation.

Step 5 – Attend the Convention

Three types of members can attend:

- ✦ Delegates – Elected at LEMs across the province
- ✦ Ex-Officio Delegates – Granted delegate status because of a role they hold, or previously held, in the Party
- ✦ Alternates – Those who ran unsuccessfully for delegate spots but who could be bumped up if another delegate from their association does not attend the convention

Step 5 – Attend the Convention

Ex-Officio delegates include:

Party Officials	Provincial Liberal Associations	Affiliated Organizations	LPC and LPC(O)
<ul style="list-style-type: none"> • Executive Council • Area Coordinators • Past Leaders • Past Presidents • Constitution Committee Chair • Fundraising Chair • Chief Financial Officer • Campaign Fund Treasurer • Legal Counsel • Chair of the Board of Arbitration 	<ul style="list-style-type: none"> • MPPs • PLA Presidents • Immediate Past Candidates • Past MPPs 	<ul style="list-style-type: none"> • 8 OYL Executive Members • Immediate Past OYL President • OYL Student Club Presidents • Women’s Club Presidents 	<ul style="list-style-type: none"> • Ontario MPs • President of LPC(O) • Immediate Past President of LPC(O) • Past LPC Leaders from Ontario

Step 5 – Attend the Convention

During registration at the convention:

- ✦ Delegates will register
- ✦ Delegates will cast their first ballot
- ✦ Alternates must register in order to be bumped up if another delegate from their association does not attend the convention

Step 5 – Attend the Convention

Voting will begin at registration and unfold as follows:

- ✦ If one candidate receives over 50% of the vote, they win
- ✦ If no candidate receives over 50% of the vote, another round of voting will take place
- ✦ The candidate with the lowest number of votes must drop off the ballot after each round
- ✦ Voting will continue until there is a winner who receives over 50% of the vote

Step 5 – Meet Our Premier

When the vote is completed, we will have selected a new Leader for the Ontario Liberal Party and the 25th Premier of Ontario.

Questions?

leadership@ontarioliberal.ca

Central and Toronto Regions:

Sean Torrie

storrie@ontarioliberal.ca

Northern and South Central Regions:

Neill Ashe

nashe@ontarioliberal.ca

Eastern and Southwest Regions / OWLC:

Hillary Buchan-Terrell

hbuchan-terrell@ontarioliberal.ca

Ontario Young Liberal Clubs:

Theresa Lubowitz

tlubowitz@ontarioliberal.ca